



GOOD MORNING
Have Good Trading Day

WEDNESDAY



Price is what you pay.
Value is what you get.

- Warren Buffet



MARKET PLUSE

INDIAN INDICES

NAME	CMP	NET CH.	%
SENSEX	28182	-237	-0.84
NIFTY	8529	-74	-0.86

INDIAN ADR'S

SYMBOL	CLOSE	GAIN/ LOSS %
DRREDDY	60.75	-2.11
HDFCBANK	61.79	-3.06
ICICIBK	10.13	-2.03
INFY	17.06	+8.18
TATAMOTOR	30.66	+0.52
WIPRO	12.46	+2.47

FII AND MF ACTIVITY

SYMBOL	In Crs.
FIIs Eq (Provisional)	-226.88
FIIs Index Future	1256.17
FIIs Index Options	-805.88
FIIs Stock Future	-13.42
FIIs Stock Options	-175.53
DII's Eq (Provisional)	146.32

CURRENCY

RBI RATE	21-JULY-2015
RUPEE - \$	63.6506
EURO	68.9081
YEN 10	51.1700
GBP	99.1358

MARKET PLUSE

GLOBAL INDICES

NAME	CMP	NET CH.	%
DOW	17919	-181	-1.00
NASDAQ	5208	-10	-0.21
NIKKEI	20581	-260	-1.25
HANG SENG	25325	-211	-0.83
SGX NIFTY	8515	-38	-0.44

WORLD COMMODITIES

FUTURE	U\$\$	CHANGES
CRUDE	50.14	-0.72
NATURAL GAS	2.889	-0.001
GOLD	1094.8	-8.7
SILVER	14.710	-0.075
COPPER	2.4715	-0.0030

WORLD EVENTS

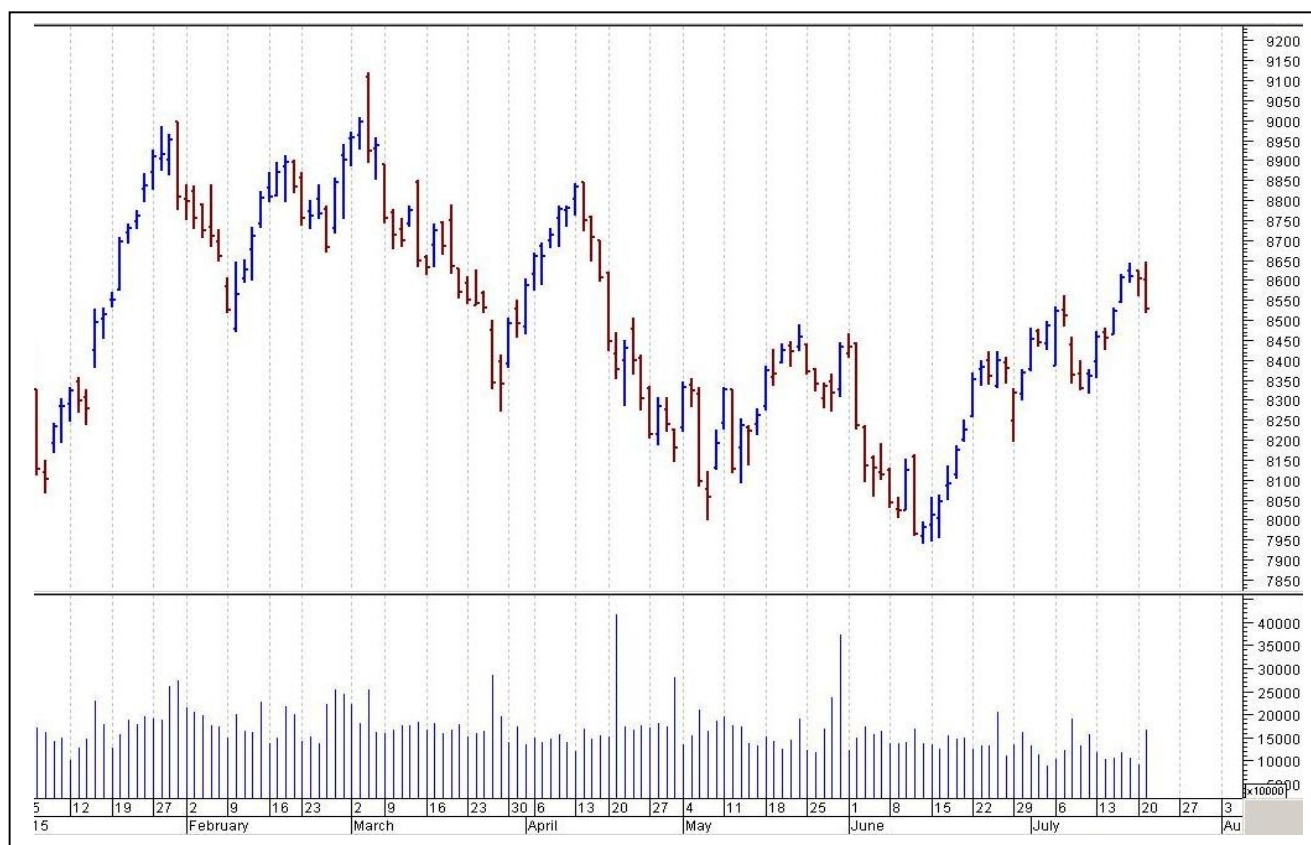
- US: Existing Home Sales
- Crude Oil Inventories
- UK: MPC Official Bank Rate Votes

TOP STORY

- Aurobindo Pharma -US FDA raises issues over quality management of co during inspection of its Unit 12 site. Company to file remediation report: ET
- Bharti Airtel says -No plans to exit Africa; will continue to invest & build a profitable business. Revenue of 4 African units that may be sold to Orange is USD 730 million. Will use the sale proceeds from Orange to pare debt.
- Pipavav Defence signs agreement with Russian company Zvyozdochka for refits & life certification of submarines In India.
- Cairn India Q1 -Consolidated net profit at Rs 835 crore versus loss of Rs 241 crore (QoQ). Consolidated total income down 1.9 percent at Rs 2,627 crore versus Rs 2,677 crore (QoQ)
- Idea Cellular Q1 -Consolidated net profit down 1.2 percent at Rs 931 crore versus Rs 942 crore (QoQ) -Consolidated revenue up 4.5 percent at Rs 8,798.3 crore versus Rs 8,422.5 crore (QoQ)
- Sun Pharma may shed part of Ranbaxy business to push growth: Tol



NIFTY CHART



MARKET COMMENTARY

Tuesday turned out to be a daunting session for the Indian equity indices which got pounded by around a percentage point after the Parliament's first day of monsoon session failed to impress traders. Final hour of trade proved to be the curse for the markets and bourses settled below their crucial 28,200 (Sensex) and 8,550 (Nifty) levels. After trading in tight band for most part of the day's trade, domestic gauges crashed like house of card in the last leg of trade. Investors remained concerned as monsoon session of the Parliament that begun today is expected to be volatile as the opposition likely to target the government over multiple scandals that erupted in the recent past. Disruptions spoiled the proceedings and Rajya Sabha was adjourned thrice on the first day and Union finance minister Arun Jaitley said the opposition does not want to let the monsoon session of Parliament run. For today's trade Nifty likely to trade in the range between 8540 – 8560 in the upper side and 8510 – 8490 in the lower side.

MARKET LEVELS

	CMP	SUPPORT LEVELS				RESISTANCE LEVELS			
NIFTY	8529	8510	8490	8470	8450	8540	8560	8590	8630
USDINR	63.6450	63.52	63.48	63.39	63.3	63.72	63.78	63.85	63.95



FUTURES CORNER

SCRIPS	CLOSE	SUPPORT	TARGET		REMARKS
		STOP LOSS	T1	T2	
BHARTIAIRTEL	446.55	441	451	455	TRADING CALL
LUPIN (SHORT)	1889.65	1899	1870	1855	TRADING CALL
BAJAJ-AUTO	2552.1	2535	2575	2595	TRADING CALL

EQUITY CORNER

SCRIPS	CLOSE	SUPPORT	TARGET		REMARKS
		STOP LOSS	T1	T2	
NO SCRIP					

DELIVERY BASED CALL / INVESTMENT CALL

SCRIPS	CMP	SUPPORT	TARGET		REMARK
		STOP LOSS	T1	T2	

BULK DEALS (BSE)

SCRIP	CLIENT NAME	BUY/SELL	QUANTITY	PRICE
NIL				

BULK DEALS (NSE)

SCRIP	CLIENT NAME	BUY/SELL	QUANTITY	PRICE
WELENT	NIPPON INVESTMENT & FINANCE CO PVT LTD	SELL	936000	53.25
WELENT	BAKULESH TRAMBAKLAL SHAH	BUY	935006	53.25

SCRIP'S IN F&O BAN

(To resume for normal trading below 80% of market wide limit required)

AMTEKAUTO, INDIACEM



NIFTY 50 STOCKS: SUPPORT & RESISTANCE						
Symbol	Close	Support 1	Support 2	Pivot Point	Resistance1	Resistance2
ACC	1439.60	1425.43	1411.27	1449.17	1463.33	1487.07
AMBUJACEM	242.10	237.77	233.43	245.48	249.82	257.53
ASIANPAINT	816.05	794.87	773.68	832.28	853.47	890.88
AXISBANK	584.65	577.93	571.22	589.47	596.18	607.72
BAJAJ-AUTO	2542.95	2509.65	2476.35	2541.30	2574.60	2606.25
BANKBARODA	150.70	149.38	148.07	151.62	152.93	155.17
BHARTIARTL	445.25	435.28	425.32	443.87	453.83	462.42
BHEL	283.65	278.80	273.95	284.40	289.25	294.85
BPCL	952.20	944.90	937.60	957.20	964.50	976.80
CAIRN	162.55	160.70	158.85	163.85	165.70	168.85
CIPLA	662.50	652.15	641.80	670.45	680.80	699.10
COALINDIA	428.65	424.43	420.22	428.47	432.68	436.72
DRREDDY	3853.15	3818.30	3783.45	3870.35	3905.20	3957.25
GAIL	365.00	361.55	358.10	367.05	370.50	376.00
GRASIM	3670.60	3613.40	3556.20	3698.20	3755.40	3840.20
HCLTECH	974.80	951.80	928.80	970.90	993.90	1013.00
HDFC	1311.60	1302.05	1292.50	1315.70	1325.25	1338.90
HDFCBANK	1098.05	1084.77	1071.48	1106.38	1119.67	1141.28
HEROMOTOCO	2687.25	2665.53	2643.82	2680.27	2701.98	2716.72
HINDALCO	108.10	105.52	102.93	108.63	111.22	114.33
HINDUNILVR	891.30	869.32	847.33	893.08	915.07	938.83
ICICIBANK	311.45	308.73	306.02	313.12	315.83	320.22
IDEA	182.15	179.67	177.18	183.08	185.57	188.98
IDFC	153.80	152.17	150.53	154.78	156.42	159.03
INDUSINDBK	938.35	930.35	922.35	940.80	948.80	959.25
INFY	1112.65	1048.77	984.88	1098.88	1162.77	1212.88
ITC	313.40	309.78	306.17	316.12	319.73	326.07
KOTAKBANK	720.65	710.83	701.02	727.82	737.63	754.62
LT	1844.95	1827.70	1810.45	1855.35	1872.60	1900.25
LUPIN	1885.30	1850.73	1816.17	1910.37	1944.93	2004.57
M&M	1298.60	1283.93	1269.27	1303.47	1318.13	1337.67
MARUTI	4152.85	4131.22	4109.58	4163.08	4184.72	4216.58
NMDC	113.65	112.90	112.15	113.75	114.50	115.35
NTPC	135.60	135.25	134.90	135.65	136.00	136.40
ONGC	281.25	277.00	272.75	284.45	288.70	296.15
PNB	137.90	136.07	134.23	139.08	140.92	143.93
POWERGRID	140.00	139.47	138.93	140.18	140.72	141.43
RELIANCE	1007.80	997.55	987.30	1013.00	1023.25	1038.70
SBIN	264.30	261.93	259.57	265.87	268.23	272.17
VEDL	136.35	133.98	131.62	138.17	140.53	144.72
SUNPHARMA	805.25	782.60	759.95	817.90	840.55	875.85
TATAMOTORS	389.10	385.70	382.30	389.50	392.90	396.70
TATAPOWER	72.15	71.23	70.32	72.92	73.83	75.52
TATASTEEL	274.70	271.00	267.30	277.55	281.25	287.80
TCS	2561.40	2544.22	2527.03	2572.28	2589.47	2617.53
TECHM	509.40	499.27	489.13	509.88	520.02	530.63
ULTRACEMCO	3223.90	3165.97	3108.03	3266.93	3324.87	3425.83
WIPRO	576.60	567.60	558.60	576.35	585.35	594.10
YESBANK	807.65	800.95	794.25	811.75	818.45	829.25
ZEEL	387.20	380.00	372.80	384.50	391.70	396.20



CORPORATE ACTION / BOARD MEETINGS

NSE Download Ref No :NSE/FAOP/30261:- Adjustment of Futures and Options contracts in the security MOTHERSUMI. The adjusted strike price shall be arrived at by dividing the old strike price by the adjustment factor i.e. 1.5. The revised market lot would be 750 wef July23,2015.

NSE Download Ref.No.:NSE/CML/3028:- Suspension of trading in securities of Company Clutch Auto Limited for non-compliance of certain clauses of Listing Agreementw.e.f 11-Aug-2015

NSE Download Ref No :NSE/FAOP/30304:- Exclusion of Futures and Options contracts on JPPOWER wef September 25, 2015

BOARD MEETINGS

COMPANY NAME	DATE	PURPOSE	RS. PER SH.
DCMSHRIRAM	22-Jul-15	Dividend	0.4
EIHAHOTELS	22-Jul-15	Annual General Meeting/Dividend	3
APCOTEXIND	22-Jul-15	Dividend	7
CESC	22-Jul-15	Annual General Meeting/Dividend	9
SHOPERSTOP	22-Jul-15	Annual General Meeting/Dividend	0.75
ORIENTHOT	22-Jul-15	Annual General Meeting/Dividend	0.4
MAHLIFE	22-Jul-15	Annual General Meeting/Dividend	6
IPCALAB	22-Jul-15	Annual General Meeting/Dividend	1
ADORWELD	22-Jul-15	Annual General Meeting/Dividend	5
PHILIPCARB	22-Jul-15	Annual General Meeting/Dividend	1
SAREGAMA	22-Jul-15	Annual General Meeting/Dividend	1.5
CHEMFALKAL	22-Jul-15	Annual General Meeting/Dividend	1.25
SONATSOFTW	22-Jul-15	Annual General Meeting/Dividend	4.25
RML	22-Jul-15	Annual General Meeting/Dividend	4.5
ACC	22-Jul-15	Dividend	11
SREINFRA	22-Jul-15	Annual General Meeting/Dividend	0.5
SRTRANSFIN	22-Jul-15	Annual General Meeting/Dividend	6
EIHOTEL	22-Jul-15	Annual General Meeting/Dividend	1.1
ABBOTINDIA	22-Jul-15	Annual General Meeting/Dividend	31
INDIANHUME	22-Jul-15	Annual General Meeting/Dividend	3
EIDPARRY	22-Jul-15	Annual General Meeting/Dividend	1
TUBEINVEST	22-Jul-15	Annual General Meeting/Dividend	0.5

NEWS & RUMOURS:

- Gold (Spot Dollar) major support = \$1080/\$1051 & Resistance = \$1132/\$1170.
- Crude oil range->\$46 to \$56.
- S&P 500 Index Little Changed as Commodities Offset IBM Declines: - The Standard & Poor's 500 Index was little changed, after the gauge approached a record Monday, as a rebound in commodity producers offset declines in IBM Corp. and United Technologies Corp.
- Euro Bond Investors Are Making Money Again as Focus Shifts to QE: - Investors in euro-zone government bonds have started making money for the first time since early June as the European Central Bank's asset-purchase plan drives prices in the calm following Greece's bailout accord.
- Gold consolidates near \$1,100-level, further losses seen ahead: - Gold prices consolidated near the \$1,100-level on Tuesday, as investors continued to focus on prospects of higher interest rates in the U.S. Prices of the precious metal have been under heavy selling pressure in recent weeks amid speculation the Federal Reserve will raise interest rates for the first time in eight years as early as September.
- Copper bounces off 2-week low as gold rebounds: - Copper prices bounced off a two-week low hit during the previous session on Tuesday, while gold and silver prices rebounded from Monday's rout, as investors returned to the market to seek cheap bargains.
- U.S. oil futures fall to 15-week low as supply glut concerns weigh: - U.S. oil futures fell to the lowest level since April on Tuesday, as ongoing worries over ample supplies and high domestic oil production drove prices down. Global oil production is outpacing demand following a boom in U.S. shale oil production and after a decision by the Organization of Petroleum Exporting Countries last year not to cut production.

TRENDS & OUTLOOK – DATE: 22- July- 2015

PRECIOUS METALS:

COMMDITY (MCX)	S2	S1	PIVOT POINT	R1	R2
GOLD (Aug)	24455	24700	24966	25255	25590
SILVER (Sep)	31500	33000	34100	35400	36736

BASE METALS

COMMDITY (MCX)	S2	S1	PIVOT POINT	R1	R2
COPPER (Aug)	341	346	353	358	363
ZINC (July)	125.40	128.10	130.30	132.75	135.35
LEAD (July)	109.20	111.60	114.10	116.55	119.10
NICKEL (July)	702	727	752	772	790

ENERGY

COMMDITY (MCX)	S2	S1	PIVOT POINT	R1	R2
CRUDE OIL (Aug)	3031	3150	3232	3333	3445
NATURAL GAS (July)	169	176	182	188	194

DATE TALKS : TODAY'S ECONOMIC DATA :

RBA Gov Stevens Speaks, MPC Official Bank Rate Votes of GBP, HPI, Existing Home Sales, and Crude Oil Inventories.



Registered Office

Indira House, 3rd Floor, 5 Topiwala Lane,
Opp. Lemington Road Police Station, Grant Road (East), Mumbai - 400007.

Corporate Office

'Ramavat House' E-15, Saket Nagar, Indore - 452018 (M.P.)

Customer Care

Tel: +91-731-4097170/ 71/ 72/ 73/ 74 M. +91 93031 72345

Email: customercare@indiratrade.com www.indiratrade.com



INSTITUTIONAL DEALING UNIT

Africa House, 5, Topiwalla Lane, Lamington Road, Mumbai, 400007

Tel: +91 22 30080678 Fax : +91 22 23870767 Email : ie@indiratrade.com

Disclaimer

This report is for private circulation within the Indira Group. This report is strictly confidential and for information of the selected recipient only and may not be altered in any way, transmitted to, copied or distributed, in part or in whole, to any other person or to the media or reproduced in any form. This report should not be construed as an offer or solicitation to buy or sell any securities or any interest in securities. It does not constitute a personal recommendation or take into account the particular investment objectives, financial situations, or any such factor. The information, opinions estimates and forecasts contained here have been obtained from, or are based upon, sources we believe to be reliable, but no representation of warranty, express or implied, is made by us to their accuracy or completeness. Opinions expressed are our current opinions as of the date appearing on this material only and are subject to change without notice.